

Phoenix

New range of air operated double diaphragm pumps.

The draft of the FLUIMAC's new double diaphragm pumps, it is mainly developed around the air distribution system, the diaphragm's high technology, the pumping chambers geometry and the valves system;

this in order to extend the functionality, not only for transfer but also for dosing.

The result is an innovative product with next-generation solutions.

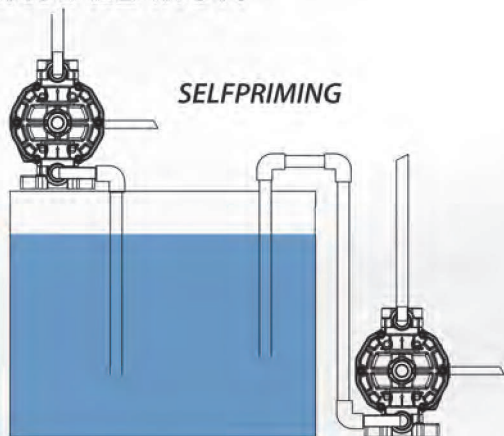
MAIN FEATURES

- . construction's materials: PP, PVDF, AISI 316, ALUMINIUM
- . Self-priming up to 6m
- . Unlimited dry running
- . Anti-stall pneumatic circuit , easy to maintain
- . possibility to adjust: flow-rate, head and speed
- . various installations and configurations
- . ATEX certifications for Zone 1 and 2 in all versions
- . air-discharge's cover with connections for various uses



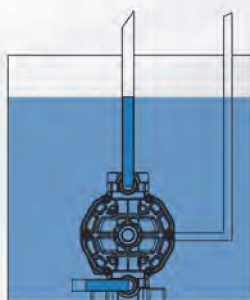
- a delivery manifold
- b suction manifold
- c a stable air exchanger
- d pumping chamber
- e diaphragms
- f ball valve

INSTALLATION

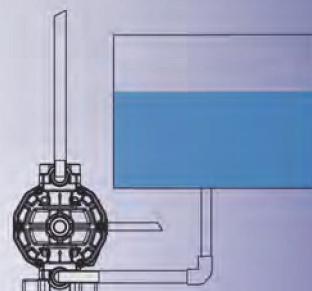


SELFPRIMING

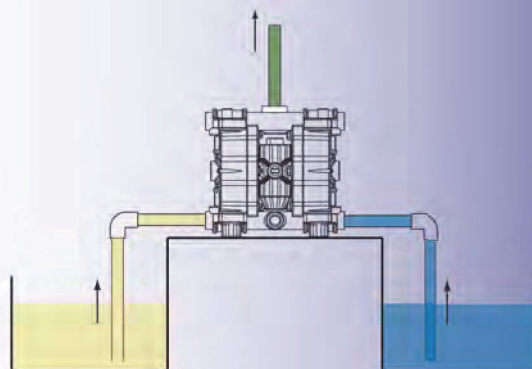
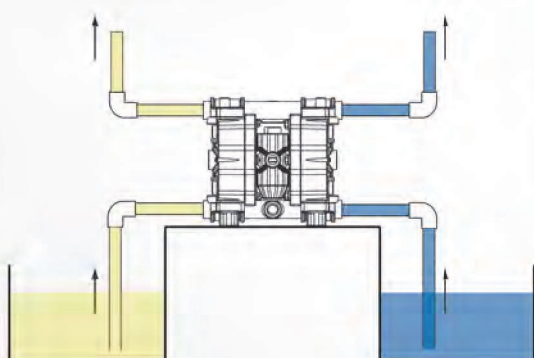
IMMERSED



TRANSFER/DRUMTRANSFER/DOSING

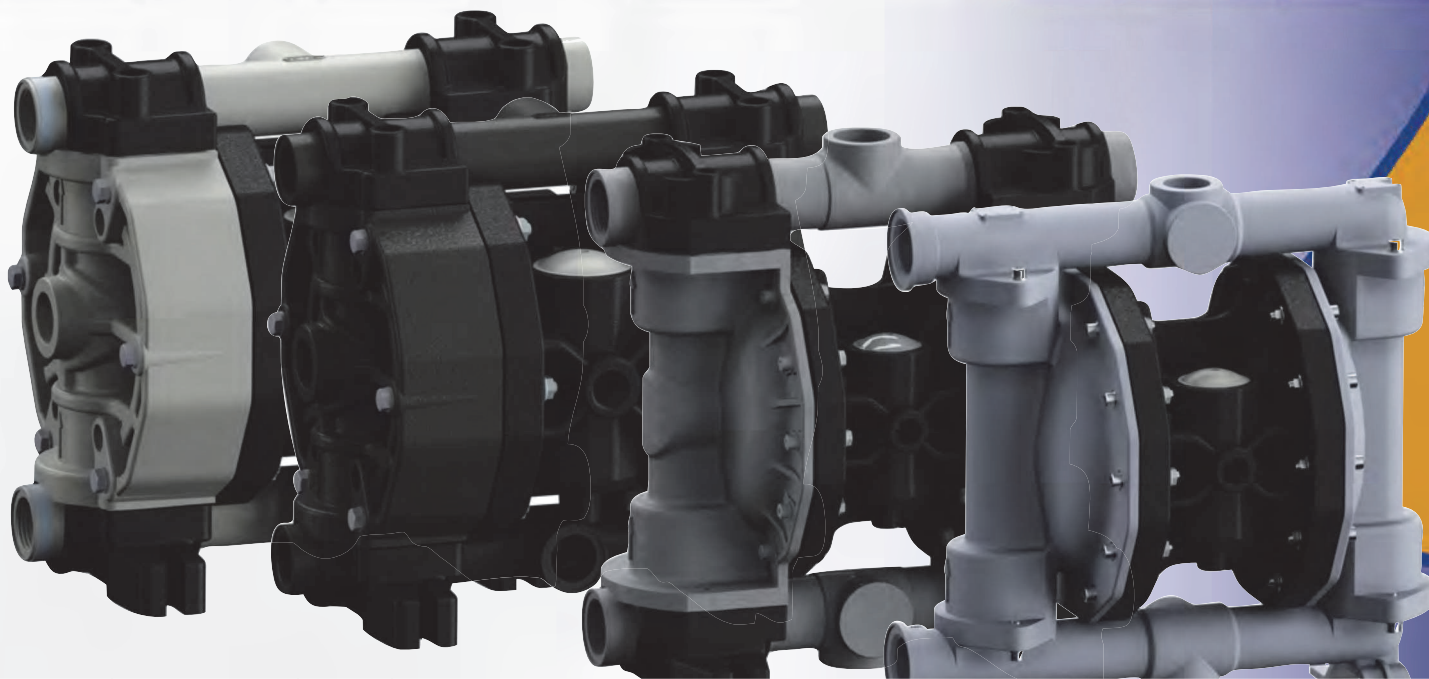


ON REQUEST: POSSIBILITY TO DOUBLE THE MANIFOLDS IN SUCTION AND IN DELIVERY



PUMPS COMPOSITION

Pump Model	Pump Body	Air Diaphragm	Fluid Diaphragm	Balls	Ball Seats	O-Rings	Connections	Atex Version
P10	P - Polypropylene	H - Hytrel	T - PTFE	T - PTFE	P - Polypropylene	D - EPDM	1 - BSP threaded	X
P20	K - PVDF pure	M - Santoprene		S - SS AISI 316	K - PVDF Pure	V - FPM	2 - Flanged	Atex Zone 1
P30	A - Aluminum	D - EPDM		D - EPDM	S - SS AISI 316	T - PTFE	3 - Clamp	
P65	S - SS AISI 316	N - NBR		N - NBR	A - Aluminum	N - NBR	4 - Twin connection	
P100	KC - PVDF+CF	U - Polyurethane			Z - PE-UHMW		5 - NPT threaded	
P160	PC - PP+CF							
P250								
P500								
P700								

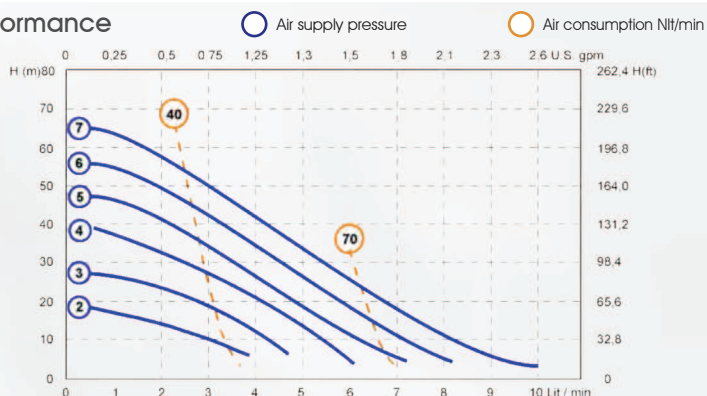


P10

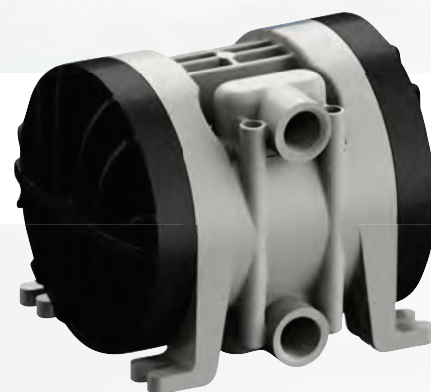
Technical data

Connections	1/4" BSP	Air connection	1/4" BSP
Max flow rate	10 l/min	Max self priming capacity	5 m
Max head	70 m	Diameter of passing solids	3 mm
Max pressure	7 bar		

Performance



* The curves and performance values refer to pumps with submerged suction and a free delivery outlet with water at 20°C, and vary according to the construction material.

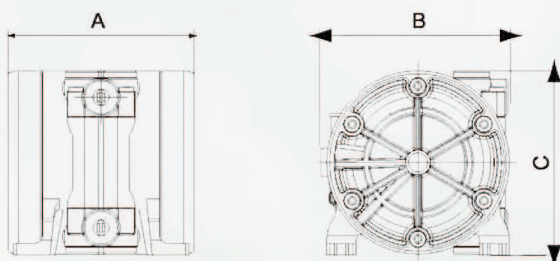


PP



PVDF+CF

Dimensions



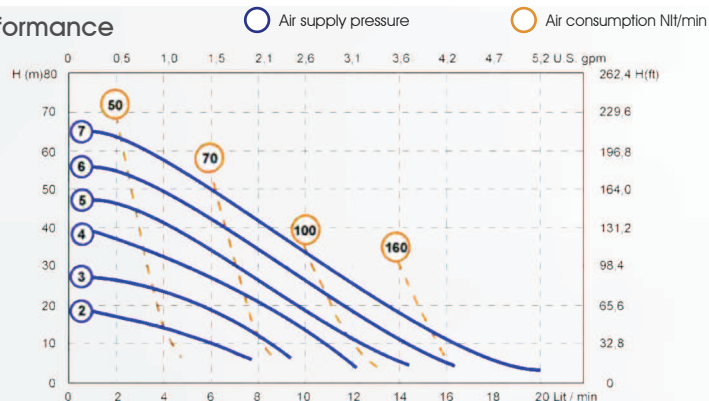
	PP	PVDF	Alu	AISI 316
A (mm)	155	155	na	na
B (mm)	135	135	na	na
C (mm)	125	125	na	na
Weight (kg)	1	1.5	na	na
Max Temperature	65°	95°	95°	95°

P20

Technical data

Connections	3/8" BSP	Air connection	1/4" BSP
Max flow rate	20 l/min	Max self priming capacity	6 m
Max head	70 m	Diameter of passing solids	3 mm
Max pressure	7 bar		

Performance



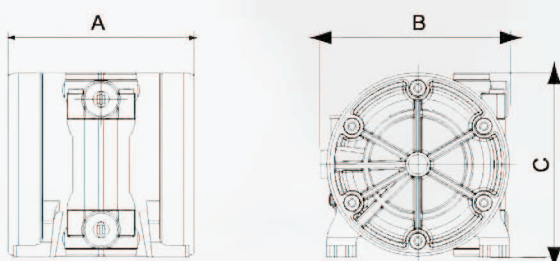
* The curves and performance values refer to pumps with submerged suction and a free delivery outlet with water at 20°C, and vary according to the construction material.

PP

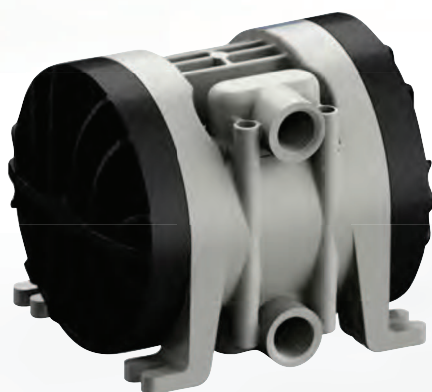


PVDF+CF

Dimensions



	PP	PVDF	Alu	AISI 316
A (mm)	155	155	na	na
B (mm)	135	135	na	na
C (mm)	125	125	na	na
Weight (kg)	1	1.5	na	na
Max Temperature	65°	95°	95°	95°



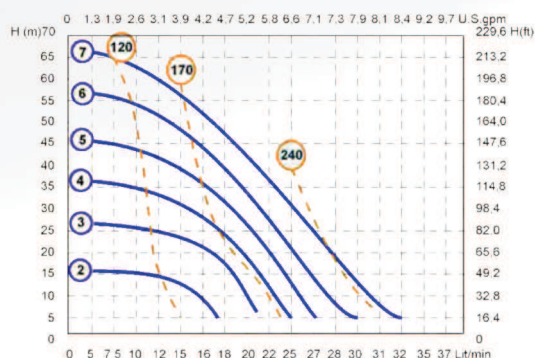
Technical data

Connections	1/2" BSP	Air connection	1/4" BSP
Max flow rate	32 l/min	Max self priming capacity	5 m
Max head	70 m	Diameter of passing solids	3 mm
Max pressure	7 bar		

Performance

○ Air supply pressure

○ Air consumption Nlt/min



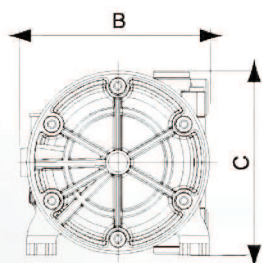
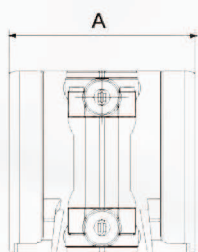
* The curves and performance values refer to pumps with submerged suction and a free delivery outlet with water at 20°C, and vary according to the construction material.

PP



PVDF+CF

Dimensions



	PP	PVDF	Alu	AISI 316
A (mm)	155	155	na	na
B (mm)	135	135	na	na
C (mm)	125	125	na	na
Weight (kg)	1	1.5	na	na
Max Temperature	65°	95°	95°	95°

NEW P50 1/2"
50LT/MIN

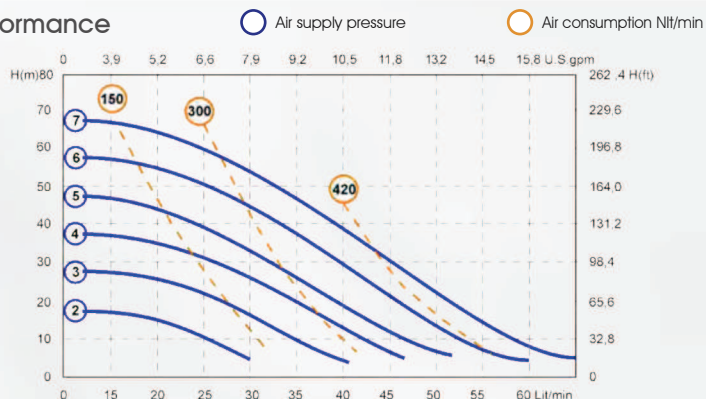
READY IN MAY 2012

P65

Technical data

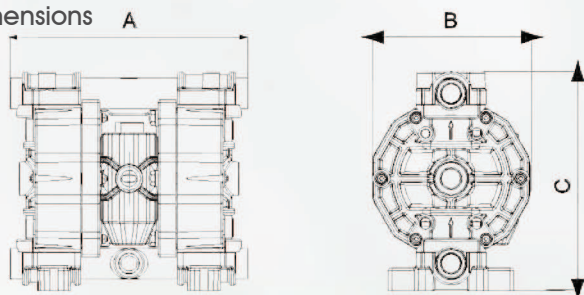
Connections	1/2" BSP	Air connection	1/2" BSP
Max flow rate	65 l/min	Max self priming capacity	6 m
Max head	70 m	Diameter of passing solids	3,5 mm
Max pressure	7 bar		

Performance



* The curves and performance values refer to pumps with submerged suction and a free delivery outlet with water at 20°C, and vary according to the construction material.

Dimensions



PP



PVDF+CF



Alu



AISI 316

	PP	PVDF	Alu	AISI 316
A (mm)	265	265	265	250
B (mm)	175	175	175	175
C (mm)	245	245	245	250
Weight (kg)	6,5	7	7	9
Max Temperature	65°	95°	95°	95°

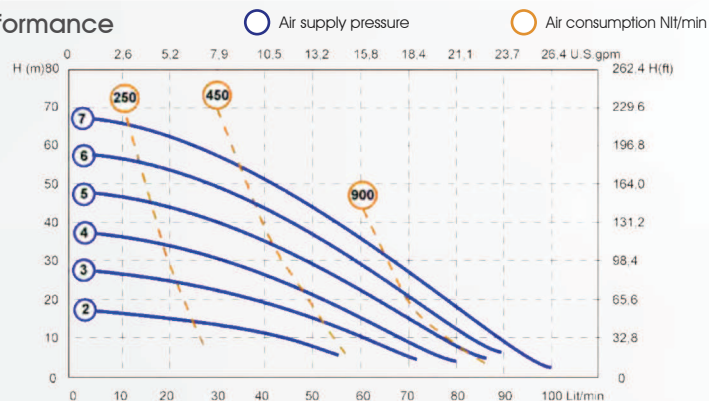
ISO-ANSI flanged connections on request

P100

Technical data

Connections	3/4" BSP	Air connection	1/2" BSP
Max flow rate	100 l/min	Max self priming capacity	6 m
Max head	70 m	Diameter of passing solids	3,5 mm
Max pressure	7 bar		

Performance



* The curves and performance values refer to pumps with submerged suction and a free delivery outlet with water at 20°C, and vary according to the construction material.

PP



PVDF+CF

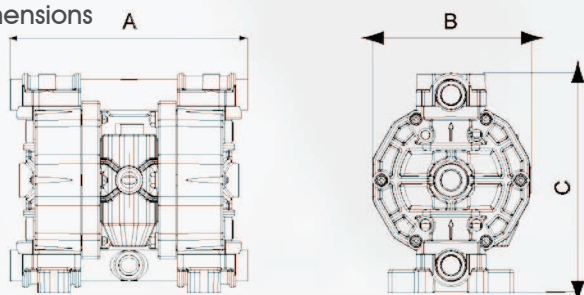


Alu



AISI 316

Dimensions



	PP	PVDF	Alu	AISI 316
A (mm)	265	265	265	250
B (mm)	175	175	175	175
C (mm)	245	245	245	250
Weight (kg)	6,5	7	7	9
Max Temperature	65°	95°	95°	95°

ISO-ANSI flanged connections on request

P160

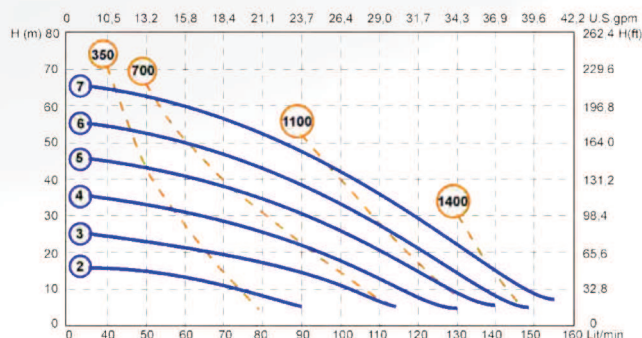


Technical data

Connections	1" BSP	Air connection	1/2" BSP
Max flow rate	160 l/min	Max self priming capacity	6 m
Max head	70 m	Diameter of passing solids	7,5 mm
Max pressure	7 bar		

Performance

○ Air supply pressure ○ Air consumption Nl/min



* The curves and performance values refer to pumps with submerged suction and a free delivery outlet with water at 20°C, and vary according to the construction material.

PP



PVDF+CF

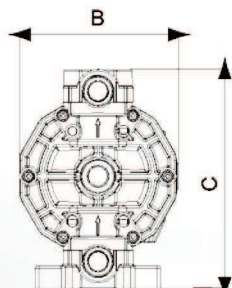
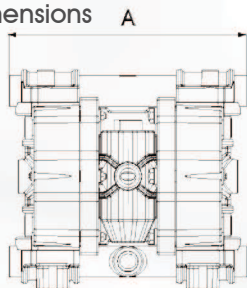


Alu



AISI 316

Dimensions



	PP	PVDF	Alu	AISI 316
A (mm)	370	370	370	360
B (mm)	220	220	220	220
C (mm)	364	364	364	365
Weight (kg)	15	16	16	20
Max Temperature	65°	95°	95°	95°

ISO-ANSI flanged connections on request

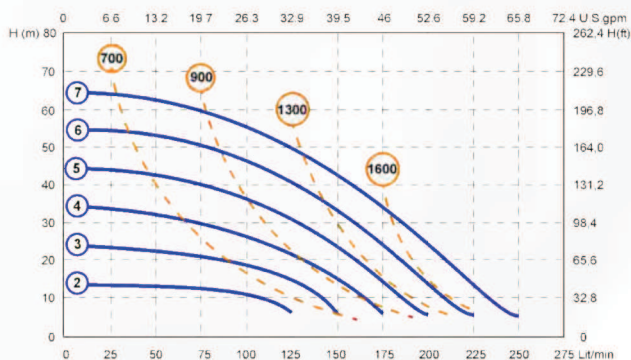
P250

Technical data

Connections	1 1/4" BSP	Air connection	1/2" BSP
Max flow rate	250 l/min	Max self priming capacity	6 m
Max head	70 m	Diameter of passing solids	7,5 mm
Max pressure	7 bar		

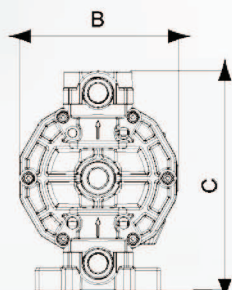
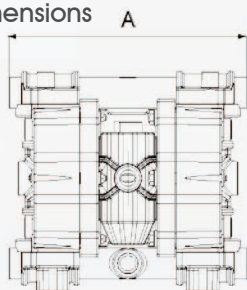
Performance

○ Air supply pressure ○ Air consumption Nl/min



* The curves and performance values refer to pumps with submerged suction and a free delivery outlet with water at 20°C, and vary according to the construction material.

Dimensions



PP



PVDF+CF



Alu



AISI 316

	PP	PVDF	Alu	AISI 316
A (mm)	595	595	595	360
B (mm)	340	340	340	340
C (mm)	572	572	572	365
Weight (kg)	31	36	36	60
Max Temperature	65°	95°	95°	95°

ISO-ANSI flanged connections on request

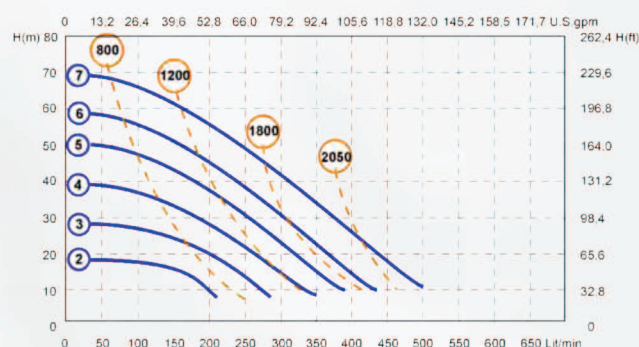
P500

Technical data

Connections	DN40 (1 1/2" BSP)*	Air connection	3/4" BSP
Max flow rate	500 l/min	Max self priming capacity	6 m
Max head	70 m	Diameter of passing solids	8,5 mm
Max pressure	7 bar		

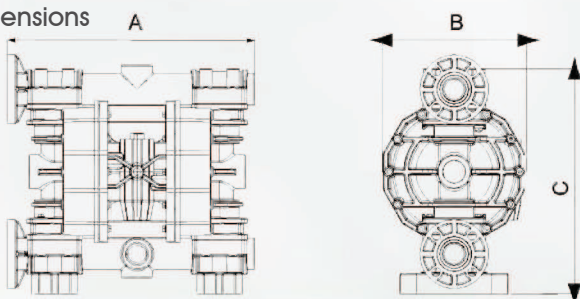
Performance

○ Air supply pressure ○ Air consumption Nlt/min



* The curves and performance values refer to pumps with submerged suction and a free delivery outlet with water at 20°C, and vary according to the construction material.

Dimensions



PP



PVDF + CF



Alu



AISI 316

	PP	PVDF	Alu	AISI 316
A (mm)	595	595	595	582
B (mm)	340	340	340	345
C (mm)	565	565	245	570
Weight (kg)	30	30	35	58
Max Temperature	65°	95°	95°	95°

(*) Threaded connections on request

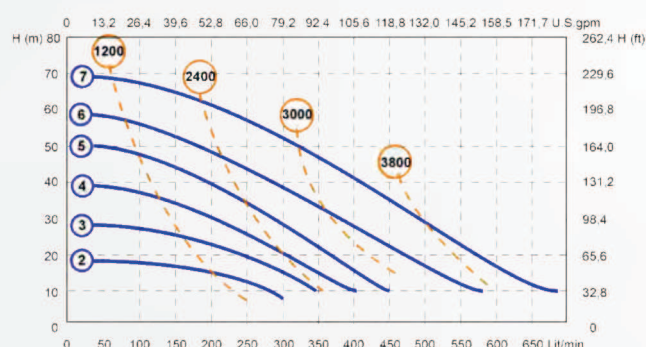
P700

Technical data

Connections	DN50 (2" BSP)*	Air connection	3/4" BSP
Max flow rate	680 l/min	Max self priming capacity	6 m
Max head	70 m	Diameter of passing solids	8,5 mm
Max pressure	7 bar		

Performance

○ Air supply pressure ○ Air consumption Nlt/min



* The curves and performance values refer to pumps with submerged suction and a free delivery outlet with water at 20°C, and vary according to the construction material.

PP



PVDF + CF

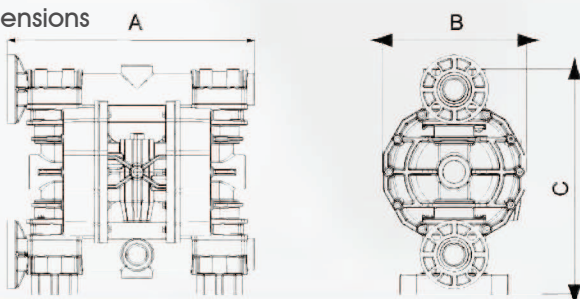


Alu



AISI 316

Dimensions



	PP	PVDF	Alu	AISI 316
A (mm)	595	595	595	582
B (mm)	340	340	340	345
C (mm)	572	572	572	570
Weight (kg)	31	36	36	60
Max Temperature	65°	95°	95°	95°

(*) Threaded connections on request

ACCESSORIES



AIR REGULATION KIT

ELECTRICAL AND PNEUMATIC CONTROL VALVES



FLANGE CONNECTION KIT



PRESSURE SWITCH CYCLE COUNTER

ELECTRICAL AND PNEUMATIC "START & STOP"



PP, PVDF, ALUMINIUM AND STAINLESS STEEL NOOZLE



INOX TROLLEY



ANTI VIBRATION FEET KIT



VALVES, FITTINGS AND CONNECTIONS IN PP, PVC, INOX



HOSE IN PVC REINFORCED, HOSE WITH PTFE OR PE INTERNAL

